

Weldcraft® W-180

Formerly WP-24W

Hand-Held Water-Cooled
TIG Welding Torches



Quick Specs

Model
W-180

Applications

Aerospace
Food/Beverage Industry
Light and Heavy Manufacturing
Maintenance and Repair

Petro/Chemical
Precision Fabrication
Shipbuilding

Rated Output

DC: 180 A, AC: 115 A

Duty Cycle 100%

Electrode Range

.020–3/32 in. (0.5–2.4 mm)

W-180 TIG Torch

Formerly known as the WP-24W, the W-180 is one of the smallest water-cooled TIG torches on the market. The W-180 is designed for welding in confined areas that require high amperage with the use of a water-cooled system.

Use high amperage in confined areas for efficient welding.

Superior maneuverability in limited-access locations with the compact torch body.

Excellent weld capacity without increasing torch size, due to the efficient cooling system.

Comfort and control increased with the light, well-balanced body design.



W-180
(WP-24W)

Note: Torch delivered may vary slightly from image shown.



Torch is warranted for 1 year parts.



Miller Electric Mfg. Co.

An ITW Company
1635 West Spencer Street
P.O. Box 1079
Appleton, WI 54912-1079 USA

Equipment Sales US and Canada

Phone: 866-931-9730
FAX: 800-637-2315
International Phone: 920-735-4554
International FAX: 920-735-4125

Torch Packages

Models		Braided Rubber	Vinyl
Old Model	New Name	25 ft. (7.6 m)	25 ft. (7.6 m)
WP-24W	W-180	WP-24W-25-R	WP-24W-25

Torch packages include torch body, handle, power cable, gas hose, water hose, and collet body wrench.

Connectors

Power Cable Connectors



195 380
50-mm Dinse-style gas thru with gas and water return lines for water-cooled torch.



195 377
50-mm Dinse-style with water return line for water-cooled torch.



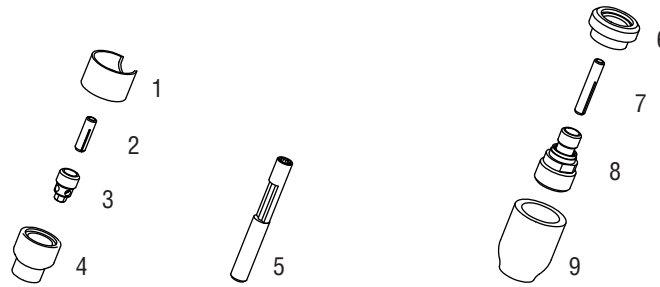
45V11
Power cable adapter for water-cooled torch.



225 028
50-mm thread lock-style for water-cooled torch.

Machines	Connection Type	1-Piece Power Cable Connector
TIG Machines		
Syncrowave® 200/210	50-mm Dinse, Gas Thru	195 380
Syncrowave® 250 DX/350 DX (Dinse)	50-mm Dinse	195 377
Syncrowave® 250 DX/350 DX (Stud)	1/2-in. Stud	45V11
Dynasty® 200/350, Maxstar® 200/350	50-mm Dinse	195 377
Dynasty® 700, Maxstar® 700	50-mm Thread Lock	225 028
Multiprocess Machines		
Dimension™ 302/452/NT 450/652	1/2-in. Stud	45V11
PipeWorx	1/2-in. Stud	45V11
XMT® 304/350	50-mm Dinse	195 377
XMT® 450	1/2-in. Stud	45V11
Engine-Driven Machines		
Most Big Blue®, Trailblazer®, Bobcat™, Blue Star® and Wildcat® models	1/2-in. Stud	45V11
Big Blue® 450 Duo CST	50-mm Dinse	195 377
General Reference		
	50-mm Dinse	195 377
	50-mm Dinse, Gas Thru	195 380
	50-mm Thread Lock	225 028
	1/2-in. Stud	45V11
Other Adapter		
	Stud to Dinse Adapter	232 728

Consumables (Refer to Owner's Manual for additional replacement parts.)



Non-Gas Lens

Electrode Size — inch (mm)	.020 (0.5)	.040 (1.0)	1/16 (1.6)	3/32 (2.4)
1 Insulator (required)	53N22	53N22	53N22	53N22
2 Collet	53N15	53N16	53N14	24C332
3 Collet Body	53N17	53N18	53N19	24CB332
Nozzle Size — size # (inch)	.165	4 (1/4)	5 (5/16)	6 (3/8)
4 Alumina	—	A53N24	A53N25	A53N27
* Lava	53N23	53N24	53N25	53N27
* Long Lava	—	53N28	—	53N26

Collet Body Wrench

5 53N20

Gas Lens

Electrode Size — inch (mm)	.020 (0.5)	.040 (1.0)	1/16 (1.6)	3/32 (2.4)	
6 Insulator (required)	53N66	53N66	53N66	53N66	
7 Collet	53N62	53N63	53N64	24GLC332	
8 Gas Lens	45V41	45V42	45V43	45V44	
Nozzle Size — size # (inch)	4 (1/4)	5 (5/16)	6 (3/8)	7 (7/16)	8 (1/2)
9 Alumina Gas Lens	53N58	53N59	53N60	53N61	53N61S

*Not shown.

Tungsten

A Line of Premium Tungsten for the Most Demanding TIG Welding Applications!

Available in four types and industry-standard diameters, Weldcraft's premium line of tungsten electrodes have undergone rigorous testing to ensure the highest quality and durability. Color-coded packages include ten seven-inch (175 mm) tungsten electrodes.

Note: Refer to manufacturer MSDS sheets for proper preparation and safety. Use proper ventilation/capture during preparation. Refer to manufacturer warning regarding ventilation.



Type	Diameter in. (mm)	Part #	Type	Diameter in. (mm)	Part #
2% Ceriated (EWCe-2)			Pure (EWP)		
Performs well in DC welding and arc starting at low-current settings, and offers excellent performance in AC processes.	0.040 (1.0)	WC040X7	Forms a clean, balled end when heated and provides good arc stability for AC welding with a balanced or unbalanced squarewave or sine wave.	0.040 (1.0)	—
	1/16 (1.6)	WC116X7		1/16 (1.6)	WP116X7
	3/32 (2.4)	WC332X7		3/32 (2.4)	WP332X7
	1/8 (3.2)	WC018X7		1/8 (3.2)	WP018X7
	5/32 (4.0)	WC532X7		5/32 (4.0)	—
2% Lanthanated (EWLa-2)			Rare Earth (EWG)		
Provides excellent arc starting, arc stability and re-ignition, and less tip erosion in AC or DC welding. Can substitute for 2% Thoriated.	0.040 (1.0)	WL2040X7	Combines the best of all alloying elements, and provides excellent arc stability in AC or DC welding.	0.040 (1.0)	—
	1/16 (1.6)	WL2116X7		1/16 (1.6)	WG116X7
	3/32 (2.4)	WL2332X7		3/32 (2.4)	WG332X7
	1/8 (3.2)	WL2018X7		1/8 (3.2)	WG018X7
	5/32 (4.0)	WL2532X7		5/32 (4.0)	—

Genuine Miller® Accessories



Wireless Remote Foot Control #300 429

For remote current and contactor

control. Receiver plugs directly into the 14-pin receptacle of Miller machine. 90-foot (27.4 m) operating range.



Wireless Remote Hand Control #300 430

For remote current and contactor control. Receiver plugs directly into the 14-pin receptacle of Miller

machine. 300-foot (91.4 m) operating range.



RCCS-14 Remote Contactor and Current Control #043 688

North/south rotary-motion fingertip control fastens to TIG torch using two Velcro® straps. Includes 26.5-foot (8 m) control cord and 14-pin plug.



RCC-14 Remote Contactor and Current Control #151 086

East/west rotary-motion fingertip control fastens to TIG torch using two Velcro® straps. Includes 26.5-foot (8 m) cord and 14-pin plug.



Cable Covers

#WC-3-10 10 ft. (3 m)

#WC-3-22 22 ft. (6.7 m)

Extension Kit

#EK-1-25-R 25 ft. (7.6 m), rubber



Low-Conductivity TIG Coolant #043 810

Sold in multiples of four in one-gallon recyclable plastic bottles. Miller coolants contains a base

of ethylene glycol and deionized water to protect against freezing to -37° Fahrenheit (-38° C) or boiling to 227° Fahrenheit (108° C).



MillerWelds.com



© 2013 Miller Electric Mfg. Co.